



# 2023

**“Royalty in the Regions.”**

*(Inspired by the coronation of  
HRH King Charles III)*



<p><b>Diamond Donors:</b>  <i>Murweh Shire Council  Charleville Self Storage  Randall Beale</i></p> <p><b>Platinum Donors:</b>  <i>Charleville Hardware  Charleville  Refrigeration &amp;  Electrical  Robert Eckel Repairs  Hotel Coronas  Charleville RSL  Dream Big Support  Services  Sandalwood &amp; Sage  South West Ford &amp;  Nissan  B.M. Gentle Building  Hair 61  Gabrielle Wheeler  Owen Family  Chang Family  Little Family</i></p>	<p><b>Gold Donors:</b>  <i>Accompanist Guild of  QLD  Charleville CWA  Charleville SDE  Christine Lee  Carr Family  Johns Family</i></p> <p><b>Silver Donors:</b>  <i>Jess Baldwin  Charleville Girl Guides  Ebsworth Family  Rogers Family  Jan Rogers</i></p> <p><b>Bronze Donors:</b>  <i>Russell Family  Cassie Owczarek  Jakob Owczarek  Sonya &amp; Ethan Harland  Angie Saunders  Latasha Fromm  Davida &amp; Lance  Melksham</i></p>	<p><b>Performing Arts Association  Committee 2023:</b>  <i>Teri Sommerfield  Katie McLeod  Leilani Thomas  Karen Mackie  Davida Melksham  Lindy Sommerfield  Vanessa Alexander  Jessica Carr  Harry Mulhall  Amiee Dolman  Jill Usher  Pat Johns  Jessica Baldwin  Samantha Owczarek  Alan MacDonald  Mellissa Doolan  Gina Hamilton  Lily Robinson  Colleen Rigby  Angela Launchbury  &amp;  Lincoln Launchbury</i></p> <p>We welcome all  Volunteers!  Please leave your  name with the  committee or email:  <a href="mailto:charlevilleperformingarts@gmail.com">charlevilleperformingarts@gmail.com</a>  to register your  interest</p>
----------------------------------------------------------------------------------------------------------------------------------------------------------------------------------------------------------------------------------------------------------------------------------------------------------------------------------------------------------------------------------------------------------------------------------------------------------------------------------------------------------------------------------------	------------------------------------------------------------------------------------------------------------------------------------------------------------------------------------------------------------------------------------------------------------------------------------------------------------------------------------------------------------------------------------------------------------------------------------------------------------------------------------------------------------------------------	----------------------------------------------------------------------------------------------------------------------------------------------------------------------------------------------------------------------------------------------------------------------------------------------------------------------------------------------------------------------------------------------------------------------------------------------------------------------------------------------------------------------------------------------------------------------------------------------------------------------------------------------------------------------------------------------------------------------------------------------------------------------

**Important Notice regarding arrival at performing areas:**

- Each door will always be attended by an usher.
- To be respectful of all performers and their right to the best possible performance conditions, we ask that those arriving at the venues adhere to the directions of the usher and refer to the schedules on the door – as per the Auditorium Rules found at the end of this program.

**AT NO TIME KNOCK ON OR OPEN DOORS UNLESS DIRECTED BY THE USHER**

# Wednesday 23<sup>rd</sup> August 2023

## NEWMARKET ROOM

ALL ALLOCATED TIMES ARE APPROXIMATE AND GUIDE ONLY – *Please refer to the door schedule and be available at least ½ hr. before your item.*

### EVENING SESSION

6:30pm

*\*\*Please note – content may not be appropriate for young audiences\*\**

#### **Festival Opening**

Teri Sommerfield  
CPAA President

#### **1 Spirit of the Festival**

1 Davida Melksham

#### **30.3 Monologue Character**

##### **Recital – Open**

1 Latasha Fromm

#### **27 Verse Speaking Australian Verse Open**

1 Jed Owen  
2 Ella-May Owen  
3 Christine Lee

#### **24.4 Verse Speaking Solo Open**

1 Davida Melksham

#### **32.2 Shakespearean Recital Open**

1 Jed Owen

#### **40.3 Prepared Speech Open**

1 Davida Melksham  
2 Latasha Fromm

#### **41.3 Prose Open**

1 Davida Melksham

### 7:30pm SUPPER BREAK

### LATE SESSION

8pm

#### **55.5 Storytelling Open**

1 Vanessa Alexander

#### **26 Verse Speaking Solo Contemporary/Slam Open**

1 Katie Chang  
2 Davida Melksham

#### **25.4 Own Composition Open**

1 Vanessa Alexander  
2 Davida Melksham

#### **37.3 Comedy Routine Open**

1 Latasha Fromm

### 8:30pm SESSION FINISH

### THANK YOU TO OUR DIAMOND DONORS



## SHIRE OF MURWEH

### PRE-RECORDED ENTRIES

#### **2.1 Instrumental Solo Novice**

1 Darcy Coombs  
2 Chett Smith  
3 Olivia Todd  
4 Hannah Webber  
5 Kane Rogers  
6 Lily Colless

#### **2.3.1 Instrumental Solo Junior Primary Prep – Yr4**

1 Conrad McCarthy  
2 Millie Cross  
3 Erin McCarthy  
4 Jono Picone  
5 Chelsea Walter  
6 Beau Hurley  
7 Mark Picone  
8 Ali Edwards  
9 Tatum Alladice-Fisher

#### **2.4.1 Instrumental Solo Senior Primary Yr5 – Yr6**

1 Haley Lee  
2 Emily Truss  
3 Regyn Tuddenham

#### **2.5 Instrumental Solo Secondary**

1 Bree Murray

#### **3.1 Instrumental Duet Primary**

1 Emily Truss & Nate  
McConnell

#### **3.4 Instrumental Duet Teacher & Student**

1 Emily Truss & Lindy

#### **23 Large Chorale Group**

1 Lone Girl Guides

# Thursday 24<sup>th</sup> August 2023

## NEWMARKET ROOM

ALL ALLOCATED TIMES ARE APPROXIMATE AND GUIDE ONLY – Please refer to the door schedule and be available at least ½ hr. before your item.

### AFTERNOON SESSION

3:30pm

#### 24.1.1 Verse Speaking Solo Prep – Yr1

- 1 Emily Nixon
- 2 Molly-Anne Owen
- 3 Alexander Chang
- 4 Pippa Ebsworth

#### 24.1.2 Verse Speaking Solo Yr2 – Yr3

- 1 Lacie Capewell
- 2 Heidi Hay
- 3 Hope Castles
- 4 Sllim Owen
- 5 Meg Gentle
- 6 Jaxson Elliott

#### 28.6 Verse Speaking Group All Ages

- 1 Nicholas & Dominic Chang  
Lela Wackerling-Rogers &
- 2 Davida Melksham

### 4:30pm AFTERNOON BREAK

### LATE AFTERNOON SESSION

4:45pm

#### 24.2.1 Verse Speaking Solo Yr4

- 1 Addison McLeod
- 2 Maddison Sainty
- 3 Charlotte Crisp
- 4 Billie Doolan
- 5 Ruby Russell
- 6 Lela Wackerling-Rogers

#### 24.2.2 Verse Speaking Solo Yr5

- 1 Ella-May Owen
- 2 Millie Carr
- 3 Jakob Owczarek
- 4 Pippa Toms

#### 25.2 Verse Speaking Solo Own Composition Primary

- 1 Zoe Ebsworth
- 2 Lela Wackerling-Rogers
- 3 Dominic Chang

#### 41.1 Prose Primary

- 1 Lela Wackerling-Rogers

### 5:45pm SESSION FINISH

### PRE RECORDED ENTRIES

#### 6.1 Group Band/Ensemble Primary

- 1 Cunnamulla Strings
- 2 Cunnamulla Bass

#### 6.2 Group Band/Ensemble Secondary

- 1 Cunnamulla Jam Group

#### 3.1 Instrumental Duet Primary

- 1 Grace Ross & Abbie  
Whitfield

#### 8.1 Nursery Rhyme Prep & Under

- 1 Lucy Alexander

#### 24.1.1 Verse Speaking Solo Primary Prep – Yr2

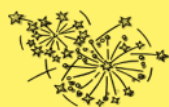
- 1 Dougal Alexander

#### 26 Verse Speaking Solo Contemporary/Slam Open

- 1 Cassie Owczarek

#### 28.6 Verse Speaking Group Open

- 1 Charleville SDE
- 2 Charleville SDE –  
Mitchell
- 3 Charleville SDE –  
St George
- 4 Charleville SDE –  
Quilpie



## **Gala Concert**

10:30am Sunday

**ENTRY: Gold Coin Donation**

# Thursday 24<sup>th</sup> August 2023

## WARREGO ROOM

**ALL ALLOCATED TIMES ARE APPROXIMATE AND GUIDE ONLY – Please refer to the door schedule and be available at least ½ hr. before your item.**

### **AFTERNOON SESSION**

**4pm**

**22 Small Chorale Group**

**Open**

- 1 Sienna, Halle, Gemma & Artie
- 2 The Trilling Trio

**13.2 Musical Theatre Solo**

**Open Adults**

- 1 Beck Little
- 2 Tammy Bell
- 3 Leilani Thomas
- 4 Jess Carr
- 5 Davida Melksham

**14.2 Musical Theatre Duet**

**Open All Ages**

- 1 Grace Cameron & Meg Hiscock
- 2 Leilani Thomas & Betty Thomas
- 3 Sienna & Halle Baldwin
- 4 Jess Carr & Beck Little

**5pm AFTERNOON BREAK**

### **LATE AFTERNOON**

**SESSION**

**5:15pm**

**3.3 Instrumental Duet Open**

- 1 Angela Launchbury & Davida Melksham

**2.6 Instrumental Solo Open**

- 1 Harry Mulhall
- 2 Beck Little
- 3 Davida Melksham

**8.4 Vocal Solo Open**

- 1 Leilani Thomas
- 2 Tammy Bell
- 3 Jess Carr

**11 Vocal Duet Open**

- 1 Jess Carr & Beck Little
- 2 Jess Carr & Cracker MacDonald

**6pm DINNER BREAK**

### **EVENING SESSION**

**6:15pm**

**15 Musical Theatre Group Open**

- 1 CDH Musical Theatre Minis
- 2 CDH Musical Theatre Intermediates
- 3 CDH Musical Theatre Bullies
- 4 CDH Musical Theatre Bystanders
- 5 CDH Musical Theatre Misfits

**7 Rock Band**

- 1 CSHS Rock Band

**7pm SESSION FINISH**

**THANK YOU TO OUR  
DIAMOND DONORS**



# Friday 25<sup>th</sup> August 2023

## NEWMARKET ROOM

*ALL ALLOCATED TIMES ARE APPROXIMATE AND GUIDE ONLY – Please refer to the door schedule and be available at least ½ hr. before your item.*

### EARLY SESSION

9am

#### 2.5 Instrumental Solo

##### Secondary

- 1 Ollie Russell – Piano
- 2 Levi Bursle
- 3 Taya Sallur
- 4 Ollie Russell - Ukulele
- 5 Alexah Little

#### 3.2 Instrumental Duet

##### Secondary

- 1 Taya Sallur & Sienna Bryan
- 2 Charmaine Newby & Reubaen Readett
- 3 Alexah Little & Ella-May Owen

### 9:45am MORNING TEA BREAK

THANK YOU TO OUR  
PLATINUM DONORS

**CHARLEVILLE  
HARDWARE**  
PTY LTD

**OPEN 7 DAYS**

Trade Depot For Taubmans Paints  
All Building & Plumbing Supplies  
Power Tools - General Hardware  
Timber & Gardening Supplies  
Tiles & Gas Refills

### MORNING SESSION

10am

#### 2.3.2 Instrumental Solo Prep –

##### Yr4 Woodwind/Brass

- 1 Ella-Rose Walsh
- 2 Nate McFadzean

#### 2.3.1 Instrumental Solo Prep –

##### Yr4 Strings/Piano

- 1 Addison McLeod
- 2 Monty Parker
- 3 Ruby Russell – Piano
- 4 Maverick Carr – Piano
- 5 Dominic Chang
- 6 Ella-Rose Walsh
- 7 Ruby Russell – Violin
- 8 Maverick Carr - Cello

#### 2.4.2 Instrumental Solo Yr5 – Yr6

##### Woodwind/Brass

- 1 Nate McConnell
- 2 Ava Horgan
- 3 Jessica Haylock

### 11:15am SESSION BREAK

### **Gold Donors:**

*Accompanist Guild of*

*QLD*

*Charleville CWA*

*Charleville SDE*

*Christine Lee*

*Carr Family*

*Johns Family*

### **Silver Donors:**

*Jess Baldwin*

*Charleville Girl Guides*

*Ebsworth Family*

*Rogers Family*

*Jan Rogers*

### **Bronze Donors:**

*Russell Family*

*Cassie Owczarek*

*Jakob Owczarek*

*Sonya & Ethan Harland*

*Angie Saunders*

*Latasha Fromm*

*Dauida & Lance*

*Melksham*

# Friday 25<sup>th</sup> August 2023

## NEWMARKET ROOM

ALL ALLOCATED TIMES ARE APPROXIMATE AND GUIDE ONLY – Please refer to the door schedule and be available at least ½ hr. before your item.

### EARLY AFTERNOON SESSION

12:30pm

#### 8.2 Vocal Solo Primary

- 1 Lela Wackerling-Rogers
- 2 Harper Shearwin
- 3 Maverick Carr
- 4 Millie Carr
- 5 Grace Cameron
- 6 Billie Doolan
- 7 Betty Thomas

#### 2.4.1 Instrumental Solo Senior Primary Strings/Piano

- 1 Ellie Russell
- 2 Ella-May Owen
- 3 Darcie Reynolds
- 4 Sienna Baldwin
- 5 Millie Carr
- 6 Nate McConnell
- 7 Ava Horgan
- 8 Jakob Owczarek

1:45pm SESSION BREAK

### AFTERNOON SESSION

2pm

#### 3.1 Instrumental Duet Primary

- 1 Nicholas & Dominic Chang
- 2 Nate McConnell & Ella Rose Walsh
- 3 Nate McFadzean & Ava Horgan
- 4 Jessica Haylock & Nate McConnell
- 5 Tamati & Stevie-Rae Noho

#### 2.1 Instrumental Solo Novice

- 1 Billie Doolan
- 2 Rosie McConnell
- 3 Charlie Tonkin
- 4 Georgina Grimm
- 5 Zoe Ebsworth

2:45pm AFTERNOON TEA

### LATE AFTERNOON SESSION

3pm

#### 3.4 Instrumental Duet Teacher Student Primary

- 1 Georgina Grimm & Lindy
- 2 Nate McConnell & Lindy
- 3 Rosie McConnell & Lindy
- 4 Ella-Rose Walsh & Lindy
- 5 Ava Horgan & Lindy
- 6 Ella-May Owen & Lindy
- 7 Grace Ross & Harry
- 8 Hunter Rylie & Harry
- 9 Monty Parker & Lindy
- 10 Maverick Carr & Beck
- 11 Millie Carr & Beck

#### 3.6 Instrumental Duet Teacher Student Adult

- 1 Davida Melksham & Lindy

4pm SESSION FINISH

THANK YOU TO OUR  
PLATINUM DONORS

*B.M. Gentle Building  
Hair 61  
Gabrielle Wheeler  
Owen Family  
Chang Family  
Little Family*

PLEASE SUPPORT THE  
CHAPLAINCY COMMITTEE  
CANTEEN:

OPEN THURS-SUN:

SOUP ~ DINNER ~ SNACKS  
LUNCH ~ CHIPS ~ DRINKS ~  
LOLLIES



# Friday 25<sup>th</sup> August 2023

## WARREGO ROOM

ALL ALLOCATED TIMES ARE APPROXIMATE AND GUIDE ONLY – Please refer to the door schedule and be available at least ½ hr. before your item.

### EARLY SESSION

9am

#### 1.1 Festival Entertainment – Waroona

- 1 Tim Keane – Verse

#### 28.1 Verse Speaking Primary Prep – Yr1

- 1 Charleville SS Prep
- 2 St Mary's Prep
- 3 St Mary's Yr1

#### 28.2 Verse Speaking Group Yr2 – Yr3

- 1 Charleville SS 1/2C
- 2 Charleville SS 1/2W
- 3 St Mary's Yr2
- 4 St Mary's Yr3

### 10am MORNING TEA

### MORNING SESSION

10:15pm

#### 28.3 Verse Speaking Group Yr3 – Yr4

- 1 Charleville SS 3/4A
- 2 Charleville SS 3/4H
- 3 St Mary's Yr4

#### 28.4 Verse Speaking Group Yr5 – Yr6

- 1 Charleville SS 5/6S
- 2 Charleville SS 5/6T
- 3 St Mary's Yr 5/6

### 11am SESSION BREAK

### THANK YOU TO OUR PLATINUM DONORS



### LUNCH SESSION

11:30am

#### 21.1 Schools Chorale Group Junior Primary

- 1 St Mary's Prep
- 2 St Mary's Yr1
- 3 St Mary's Yr2
- 4 St Mary's Yr3

#### 21.2 Schools Chorale Group Senior Primary

- 1 St Mary's Yr4
- 2 St Mary's Yr5/6
- 3 St Mary's Choir
- 4 Augathella SS Choir
- 5 CSS Choir

#### 23 Large Chorale Group Open

- 1 CDH Musical Theatre Minis
- 2 CDH Musical Theatre Intermediates

### 12:30pm LUNCH BREAK

# Friday 25<sup>th</sup> August 2023

## WARREGO ROOM

ALL ALLOCATED TIMES ARE APPROXIMATE AND GUIDE ONLY – Please refer to the door schedule and be available at least ½ hr. before your item.

### AFTERNOON SESSION

1pm

#### 6.1.1 Group Band/Ensemble Intermediate Group

- 1 Ellangowan Ensemble
- 2 Russell Family
- 3 CSS Strings
- 4 St Mary's Strings

#### 6.1.2 Group Band/Ensemble Beginner Group

- 1 Augie Ants
- 2 St Finbarr's
- 3 CSS Junior Strings
- 4 St Mary's Junior  
Strings
- 5 Quilpie Trio

1:45pm AFTERNOON TEA

THANK YOU TO OUR  
PLATINUM DONORS



### LATE AFTERNOON SESSION

3:30pm

#### 48.2.2 Group Dance Junior Primary Jazz/Modern

- 1 CDH 1/2 Jazz
- 2 Cunnamulla Dance School
- 3 CDH Junior Funk
- 4 St Mary's Dance
- 5 CDH 3 Jazz

#### 48.3.1 Group Dance Senior Primary Lyrical

- 1 MAD Dancers
- 2 CDH 4/5 Lyrical

#### 48.3.2 Group Dance Senior Primary Jazz

- 1 CDH Senior Funk
- 2 MAD Dancers
- 3 St Mary's Dance
- 4 Yass Queens
- 5 CDH 5 Jazz
- 6 CDH 4 Jazz
- 7 CDH 6 Jazz
- 8 CDH Musical Theatre  
Intermediates

4:45pm SESSION BREAK

### EVENING SESSION

5pm

#### 44.3 Jazz/Modern Solo Senior Primary

- 1 Millie Carr
- 2 Lily Colless
- 3 Ellie Russell
- 4 Addison Itzstein
- 5 Peggy Stirton
- 6 Darcie Reynolds

5:30pm IMPROV BREAK

### LATE EVENING SESSION

6:30pm

#### 50.1.4 Improv Dance Open

- 1 Birrali Flintoff
- 2 Laura Russell

#### 50.1.3 Improv Dance Senior Secondary

- 1 Cadence Ogilvie
- 2 Lucy Jury

#### 50.1.1 Improv Dance Senior Primary

- 1 Betty Thomas
- 2 Ellie Russell
- 3 Millie Carr

7:15pm FINISH SESSION

# Saturday 26<sup>th</sup> August 2023

## NEWMARKET ROOM

ALL ALLOCATED TIMES ARE APPROXIMATE AND GUIDE ONLY – Please refer to the door schedule and be available at least ½ hr. before your item.

### EARLY SESSION

9am

#### 38.1 Impromptu Reading

##### Primary

- 1 Lela Wackerling-Rogers
- 2 Lily Colless

#### 38.1 Impromptu Reading

##### Secondary

- 1 Taya Sallur

#### 29.1 Solo Mime Junior Primary

- 1 Maverick Carr

#### 30.1 Monologue Character

##### Recital Primary

- 1 Lily Colless

#### 30.2 Monologue Character

##### Recital Secondary

- 1 Taya Sallur

#### 24.3 Verse Speaking Solo

##### Secondary

- 1 Eliza Toms
- 2 Taya Sallur

#### 37.1 Comedy Routine Primary

- 1 Maverick Carr

### 9:45am SESSION BREAK

### MORNING SESSION

10am

#### 38.3 Impromptu Reading Open

- 1 Karen Mackie
- 2 Davida Melksham
- 3 Christine Lee

#### 39.1 Bible Reading Primary

- 1 Lela Wackerling-Rogers

#### 39.3 Bible Reading Open

- 1 Davida Melksham
- 2 Jeff Parry
- 3 Karen Mackie
- 4 Kerrye Parry
- 5 Latasha Fromm

### 10:45am AFTERNOON TEA

THANK YOU TO OUR  
PLATINUM DONORS



### LUNCH SESSION

11am

#### 10.2 Vocal Solo Open

##### Jazz/Pop/Alternative

- 1 Ethan Harland

#### 12 Vocal Solo Religious Open

- 1 Betty Thomas
- 2 Ethan Harland
- 3 Taya Sallur
- 4 Tammy Bell
- 5 Debra Hoare

#### 8.3 Vocal Solo Secondary

- 1 Ethan Harland
- 2 Taya Sallur

#### 9.2 Country Vocal Solo Secondary

- 1 Taya Sallur
- 2 Ethan Harland

### 12noon LUNCH BREAK

# Saturday 26<sup>th</sup> August 2023

## NEWMARKET ROOM

ALL ALLOCATED TIMES ARE APPROXIMATE AND GUIDE ONLY – Please refer to the door schedule and be available at least ½ hr. before your item.

### AFTERNOON SESSION

12:30pm

#### 9.3 Country Vocal Solo Open

- 1 Tammy Bell
- 2 Jess Carr

#### 10.1 Vocal Solo Open

##### World/Classical/Folk

- 1 Leilani Thomas
- 2 Ethan Harland
- 3 Tammy Bell
- 4 Jess Carr

#### 17 Vocal Solo Open Sing & Play

- 1 Ethan Harland
- 2 Beck Little

### 1:15pm SESSION FINISH



### CREATIVE WRITING SECTION

#### 51.1 Short Story Prep – Yr3

- 1 Clara Alexander
- 2 Sllim Owen
- 3 Molly-Anne Owen
- 4 Lily Jeisman
- 5 Jan Kenafake
- 6 Indiana McLeod
- 7 Olivia Itzstein
- 8 Georgia Itzstein
- 9 Pippa Ebsworth
- 10 Maverick Carr
- 11 Jack Doolan

#### 51.2 Short Story Yr4 – Yr6

- 1 Zoe Ebsworth
- 2 Ella-May Owen
- 3 Addison McLeod
- 4 Nevaeh Holley
- 5 Billie Doolan
- 6 Brydie Lindsay
- 7 Addison Itzstein
- 8 Lela Wackerling-Rogers
- 9 Millie Carr
- 10 Lily Colless

#### 51.3 Short Story Yr7 – Yr9

- 1 Alexah Little
- 2 Maddy Savill
- 3 Taya Sallur

#### 51.4 Short Story Open

- 1 Birrali Flintoff
- 2 Jed Owen
- 3 Davida Melksham
- 4 Jan Rogers

### CREATIVE WRITING SECTION

#### 52.1 Humorous Short Story Primary

- 1 Indiana McLeod
- 2 Millie Carr
- 3 Addison McLeod
- 4 Lela Wackerling-Rogers
- 5 Jack Doolan

#### 52.3 Humorous Short Story Open

- 1 Rose Offer
- 2 Jan Rogers

### THANK YOU TO OUR PLATINUM DONORS

**ROBERT ECKEL REPAIRS**

- ✓ Service and Repairs on all makes and models
- ✓ 4 x 4 Specialists
- ✓ E.F.I. ✓ Radiators
- ✓ Log Book Services
- ✓ Hydraulic Hoses & Fittings
- ✓ Wheel Alignments
- ✓ LPG Installation and Service
- ✓ Authorised Inspection Station

**BICYCLES & ACCESSORIES**

**4654 1358**

**88 Edward Street Charleville**

Ref. 37

# Saturday 26<sup>th</sup> August 2023

## WARREGO ROOM

ALL ALLOCATED TIMES ARE APPROXIMATE AND GUIDE ONLY – *Please refer to the door schedule and be available at least ½ hr. before your item.*

### EARLY SESSION

8:30am

#### **48.1 Group Dance Prep & Under**

- 1 CDH Tiny Tots
- 2 CDH Kindy/Prep

#### **49 Nursery Rhyme Prep & Under**

- 1 C & K Charleville Kindy

#### **42.3 Ballet/Contemporary Solo Senior Primary**

- 1 Lily Colless
- 2 Zoe Ebsworth
- 3 Harper Shearwin

#### **42.4 Ballet/Contemporary Solo Junior Secondary**

- 1 Milla Lawson
- 2 Jessica Partridge

#### **43.2 Lyrical Solo Senior Primary**

- 1 Sienna Baldwin
- 2 Grace Cameron
- 3 Addison McLeod
- 4 Betty Thomas
- 5 Dakota Latchman

#### **9:30am MORNING TEA**

### MORNING SESSION

9:45am

#### **47.1 Dance Duo Primary**

- 1 Jocelyn Harper & Bella McDonell
- 2 Lily Colless & Lexi Dingwall
- 3 Betty Thomas & Lacy Orupe
- 4 Dakota Latchman & Millie Williams
- 5 Riley Sullivan & Peggy Stirton
- 6 Millie Carr & Harper Shearwin
- 7 Sarai Flintoff & Juno Ogilvie

#### **43.3 Lyrical Solo Junior Secondary**

- 1 Alexah Little
- 2 Tahnee Reynolds
- 3 Paisley Saunders
- 4 Taya Sallur
- 5 Colbee Kenafake
- 6 Isla Allwood

#### **10:45am SESSION BREAK**

### LATE MORNING SESSION

11am

#### **45.1 Tap Solo Novice**

- 1 Brooke Haig

#### **45.3 Tap Solo Senior Primary**

- 1 Harper Shearwin
- 2 Millie Carr
- 3 Lily Colless
- 4 Zoe Ebsworth

#### **45.6 Tap Solo Adults**

- 1 Birrali Flintoff

#### **45.5 Tap Solo Senior Secondary**

- 1 Cadence Ogilvie

#### **46.4 Character/National Solo Open**

- 1 Birrali Flintoff

#### **11:45am LUNCH BREAK**

**THANK YOU TO OUR PLATINUM DONORS**



# Saturday 26<sup>th</sup> August 2023

## WARREGO ROOM

ALL ALLOCATED TIMES ARE APPROXIMATE AND GUIDE ONLY – Please refer to the door schedule and be available at least ½ hr. before your item.

### LUNCH SESSION

12:15pm

#### 43.4 Lyrical Solo Senior Secondary

- 1 Lucy Jury
- 2 Maddie Shearwin
- 3 Bailey Hockey

#### 43.5 Lyrical Solo Open

- 1 Birrali Flintoff
- 2 Chloe Dyer

#### 48.5.1 Dance Group Senior Secondary Lyrical

- 1 St Johns Dance Troupe

#### 48.2.1 Dance Group Junior Primary Ballet/Contemporary/Lyrical

- 1 CDH 1/2 Ballet
- 2 CDH 3 Lyrical

#### 48.4.1 Dance Group Junior Secondary Ballet

- 1 EKSB Contemporary
- 2 CDH 6+ Lyrical
- 3 EKSB Ballet

#### 42.6 Ballet/Contemporary Solo Open

- 1 Birrali Flintoff – Ballet
- 2 Birrali Flintoff – Contemporary

**1:15pm SESSION BREAK**

### EARLY AFTERNOON SESSION

1:30pm

#### 44.1 Jazz/Modern Solo Novice

- 1 Brooke Haig

#### 44.2 Jazz/Modern Solo Junior Primary

- 1 Indiana McLeod
- 2 Lacy Orupe

#### 44.5 Jazz/Modern Solo Senior Secondary

- 1 Lucy Jury
- 2 Bailey Hockey

#### 44.6 Jazz/Modern Solo Open

- 1 Birrali Flintoff

#### 48.5.2 Dance Group Secondary Jazz

- 1 St Johns Dance Troupe
- 2 CDH 7+ Jazz

#### 42.5 Ballet/Contemporary Solo Senior Secondary

- 1 Cadence Ogilvie – Ballet
- 2 Lucy Jury – Ballet
- 3 Bailey Hockey
- 4 Cadence Ogilvie - Contemporary
- 5 Lucy Jury – Contemporary

**2:30pm AFTERNOON TEA BREAK**

### AFTERNOON SESSION

2:45pm

#### 47.2 Dance Duo Secondary

- 1 Jessica Partridge & Isla Allwood
- 2 Lucy Jury & Cadence Ogilvie
- 3 Maddie & Harper Shearwin

#### 48.6 Group Dance Open

- 1 EKSB – Tap
- 2 EKSB – Ballet
- 3 EKSB – Cheer
- 4 EKSB – Novelty
- 5 EKSB – Hip Hop

**3:30pm SESSION BREAK**

**THANK YOU TO OUR PLATINUM DONOR**

**South West Ford  
South West Nissan**

- SALES
- SERVICE
- PARTS



☎ **4654 1477**

**50-56 Alfred Street,  
CHARLEVILLE Ref. H5**

*Fully Equipped Workshop*

# Saturday 26<sup>th</sup> August 2023

## WARREGO ROOM

ALL ALLOCATED TIMES ARE APPROXIMATE AND GUIDE ONLY – Please refer to the door schedule and be available at least ½ hr. before your item.

### LATE AFTERNOON SESSION

3:45pm

#### 47.3 Dance Duo Open

- 1 Cadence Ogilvie & Birrali Flintoff
- 2 Rose Offer & Laura Russell
- 3 Lucy Jury & Birrali Flintoff
- 4 Emily Ogilvie & Birrali Flintoff

#### 53 Festival Entertainment Open

- 1 Girl Guides – Believer
- 2 Clara Alexander
- 3 Girl Guides – Lion King
- 4 Davida Melksham
- 5 Addison Itzstein & Addison McLeod
- 6 Lela Wackerling-Rogers

### 4:45pm SESSION BREAK

### EVENING SESSION

5pm

#### 54 Group Entertainment Open

- 1 Zoe & Pippa Ebsworth & Lacy Orupe
- 2 Betty & Walter Thomas

#### 13.1 Musical Theatre Vocal Solo Open

- 1 Ethan Harland
- 2 Millie Carr
- 3 Taya Sallur
- 4 Betty Thomas
- 5 Harper Shearwin
- 6 Grace Cameron
- 7 Billie Doolan
- 8 Halle Baldwin

### 6pm SESSION FINISH

**THANK YOU TO OUR  
PLATINUM DONOR**



### SHORT FILM ENTIRES

#### 57.1 Short Film Individual Primary

- 1 Dougal Alexander
- 2 Clara Alexander
- 3 Millie Carr
- 4 Jakob Owczarek

#### 58.1 Short Film Group Primary

- 1 Girl Guides Group 1
- 2 Girl Guides Group 2
- 3 Girl Guides Group 3
- 4 St Mary's Group 1
- 5 St Mary's Group 2
- 6 St Mary's Group 3
- 7 St Mary's Group 4

# TROPHIES AND AWARDS (Presented at the Gala Concert)

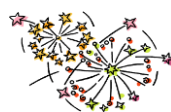
## OUTSTANDING AWARDS\*

Outstanding Instrumental Solo by an Adult  
 Outstanding Instrumental Solo by a Student  
 Outstanding Choral Group  
 Outstanding Large Ensemble  
 Outstanding Instrumental Duet Student  
 Outstanding Instrumental Duet Adult  
 Outstanding String Ensemble  
 Outstanding Wind Ensemble  
 Outstanding Piano Solo  
 Outstanding String Solo  
 Outstanding Vocalist Student  
 Outstanding Vocalist Adult  
 Outstanding Verse Speaker Student  
 Outstanding Verse Speaker  
 Outstanding Verse Speaking Group  
 Outstanding Classic Ballet Soloist  
 Outstanding Dance Jazz/Modern Soloist  
 Outstanding Tap Soloist  
 Outstanding Dance Group  
 Outstanding Creative Writing

*\*Outstanding Awards are given according to merit. These awards may not be given every year.*

## ENCOURAGEMENT AWARDS

Musical Item Adult Encouragement  
 Verse Speaking Encouragement Award  
 Vocal Encouragement Award  
 QCWA Creative Writing Encouragement Award  
 Sandalwood & Sage Creative Writing Excellence Award  
 Dance Encouragement Award Student  
 Drama Encouragement Award  
 Instrumental Encouragement Award  
 Gwen McCarthy Ballet Encouragement Award  
 The Gwen McCarthy Tap Encouragement Award  
 The Charleville State High School P & C Encouragement award for Charleville State High School Student (Charleville State High School P&C)  
 The St Mary's School P&F Encouragement award for St Mary's School Student (St Mary's P&F)  
 Dream Big Fledgling Award for Excellence in Film



## ***Gala Concert***

**10:30am Sunday**

**ENTRY: Gold Coin Donation**



# Charleville Performing Arts Festival

23<sup>rd</sup> –27<sup>th</sup> August 2023

## Notes and Conditions:

Please ensure you take the time to read these Notes and Conditions prior to attending the Festival

## AUDITORIUM RULES:

### ENTRY/EXIT

Doors will be closed, and entry to or exit from the venue will not be permitted during performances.

*Doors will be opened between performances for entry or exit.*

A running sheet on the outside of the door of each venue will advise which performance is in process at that time.

Please do not knock on the closed door.

Item times shown in the program are approximate only. Please arrive at least half an hour before the time listed for your Item.

ANY issues or feedback can be given to Festival staff in the office.

### **SILENCE**

Members of the audience are requested to maintain silence and to remain seated during performances, announcements and while the panel members are speaking.

### **PHOTOGRAPHY/RECORDING**

Under copyright law and child protection requirements, the use of cameras enabled for flash photography (including mobile phone cameras) and audio recorders is forbidden, unless specifically authorized by the Charleville Performing Arts Festival Committee for official or publicity purposes. **No flash photography please during performances – it is distracting for some competitors, and we strive to create a space which nurtures all performances.** Limited video recording of performances for personal use is allowed – if authorised – but is not to be distributed or shared on Social Media.

### **MOBILE PHONES**

All mobile phones **must be switched off or on silent** when in performance spaces.

## CODE OF ETHICS

At all times, Performers are expected to afford the same consideration to others as they would expect for themselves. **Behaviour not demonstrating the spirit of this Festival will not be tolerated.**

Performers who show such behavior will be disqualified immediately and members of the audience displaying inappropriate behavior will be asked to leave the venue.

To ensure that adequate consideration is given, please remember to

- **Give due acclaim and encouragement to each other. Not only is this in the spirit of our Festival, but this is considered by panelists for some awards.**
- Remain seated while a performance is in progress.
- Maintain silence during each performance.
- **DRESS CODE**
- The Charleville Performing Arts Festival Association Inc supports a Dress Code for all performers throughout the Festival. All parents and teachers are urged to observe this standard of dress. Formal or Semi-Formal dress is encouraged where appropriate. Neat casual is suitable. Midriffs are not to be shown. Costumes are not essential (*except as listed in General Conditions #6*) but are encouraged for many sections. Unless a costume requirement, shoes must be worn in the Performance Complex.
- **WORKPLACE HEALTH & SAFETY**
- Please refrain from climbing on the stair railings and observe all signage.
- **Please remove all drink bottles and rubbish from the auditorium.**
- **NO food is allowed in the auditorium.**
- **PLEASE leave toilets as clean as you find them, and place used paper towel in the bin provided.**
- **If required a first aid kit is available at the office.**
- **Thank You all for attending our wonderful Festival!**
- **A huge Thank You and Congratulations to all performers!**
- **Lastly, Thank You so much to all the community volunteers who make this Festival possible: panel members, accompanists, comperes, ushers, front door greeters and backstage crew.**
- **DATE CLAIMER:**  
**The 2024 Charleville Performing Arts Festival is planned for 28<sup>th</sup> – 31<sup>st</sup> August 2024 – SAVE THE DATE!**



**CHORAL – CREATIVE WRITING – INSTRUMENTAL –  
FILM – VOCAL – DANCE – VERSE SPEAKING –  
DRAMA – STORYTELLING  
PROGRAM: \$5**



**23<sup>rd</sup> – 26<sup>th</sup> August 2023**

**Charleville Racecourse Complex  
Admission: Gold Coin**

**GALA CONCERT:**

**SUNDAY 27<sup>TH</sup> AUGUST 2023  
10:30AM**